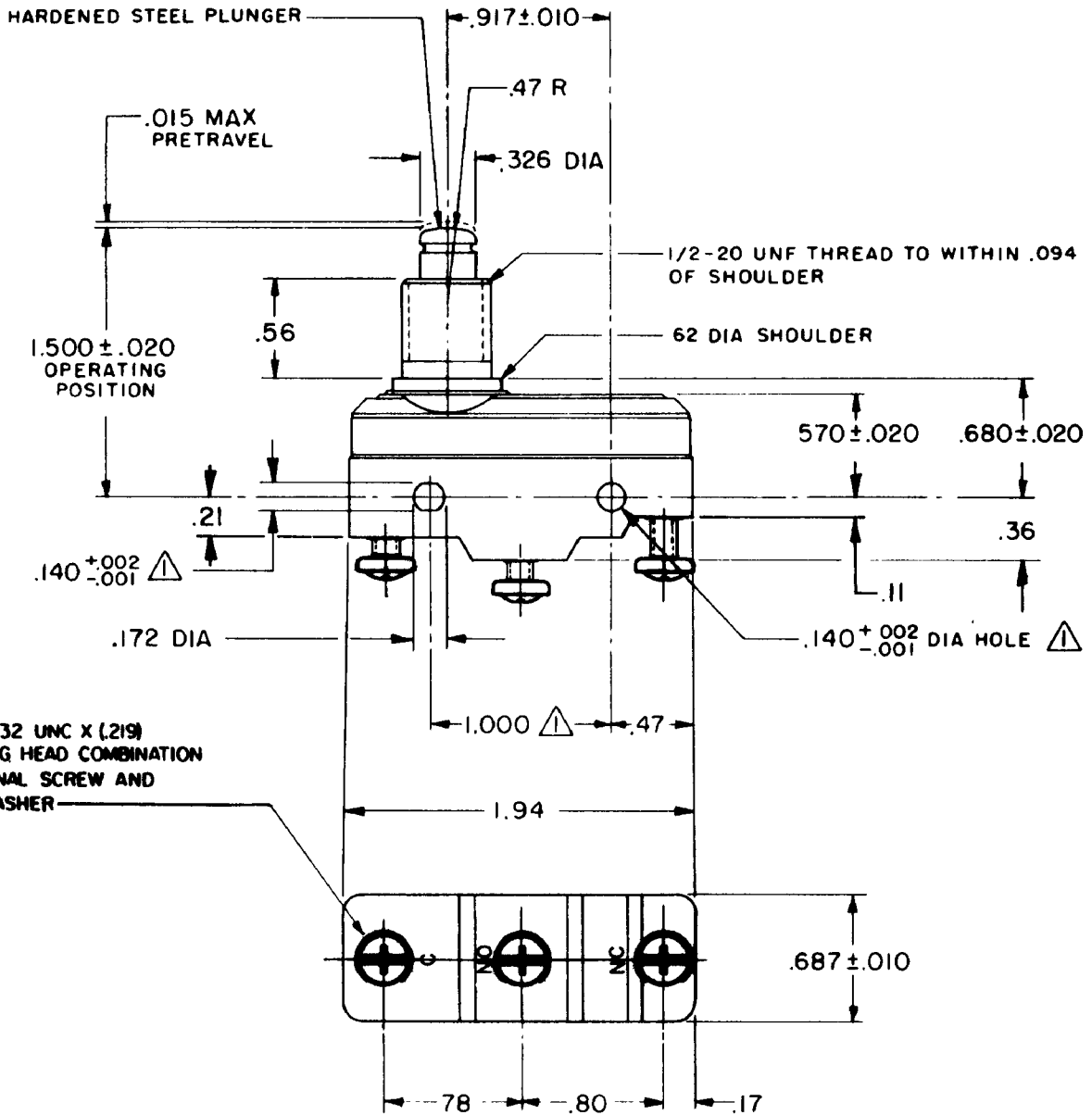


**MICRO SWITCH**FREEPORT, ILLINOIS, U.S.A.
A DIVISION OF HONEYWELL

FED. MFG. CODE 91929

SWITCH-BASICCATALOG LISTING
BZ-2RQ68

ALH6500 & JG08455



NOTE

∇ - MOUNTING HOLES WILL ACCEPT PINS OR SCREWS OF 139 MAX DIA ON 1.000 ± .002 CENTERS

2 - HARDWARE FURNISHED UNASSEMBLED

THIS DRAWING COVERS A PROPRIETARY ITEM AND IS THE PROPERTY OF MICRO SWITCH, A DIVISION OF MINNEAPOLIS-HONEYWELL REGULATOR CO. THIS DRAWING IS NOT TO BE COPIED OR USED WITHOUT THE APPROVAL OF MICRO SWITCH.

CHARACTERISTICS

OPERATING FORCE ----- 9 - 13 OZ

RELEASE FORCE ----- 4 OZ MIN

DIFFERENTIAL TRAVEL -- .0004 - .0020

OVERTRAVEL ----- .125 MIN

ELECTRICAL DATA

CONTACT ARRANGEMENT
S P D T

15A - 125, 250 OR 480 VAC, 2A - 600 VAC
1/8HP - 125 VAC, 1/4HP - 250 VAC
CODE L74 1/2A - 125 VDC, 1/4A - 250 VDC

L288

L315

L306 16A 250V T85 5E4

SCALE FULL

DO NOT SCALE PRINT

UNLESS OTHERWISE NOTED

DIMENSIONS ARE IN INCHES

TOLERANCES ARE:

ONE PLACE (.0) ± .030

TWO PLACE (.00) ± .015

THREE PLACE (.000) ± .005

ANGLES ±

WEIGHT .120 LB

BZ-2RQ68

PAGE 1 OF 1

M

DRAWING NUMBER

ISSUE 10

REPLACES

RELEASE NO.

CHECK

18 FEB 06

RJ

CHECK

10 APR 64

DRAW

10 APR 64

CHECK

10 APR 64

DRAW

10 APR 64

CHECK

10 APR 64

DRAW

10 APR 64

FORMTEK

FO-80378

REVISIONS

A	CO17410	LLD	31 MAR 64
B	CO54383	BEN	4 NOV 74
C	CO38099	K P K	6 JUN 77
D	CO-73287-C	K D R	21 JUN 93
E	CO-78528	K D R	3 SEP 93
F	CO-77592	DAW	15 AUG 94
G	CO-82497-D	DLT	29 MAR 96
H	CO93346	DLT	1 SEP 98
J	0018449	DVM	18 FEB 06